

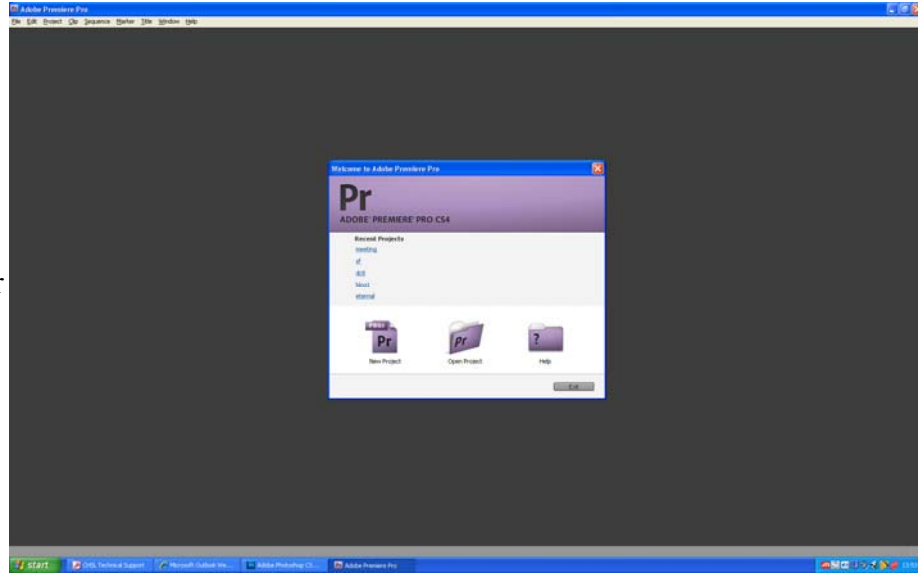


A BEGINNERS GUIDE TO USING ADOBE PREMIERE PRO

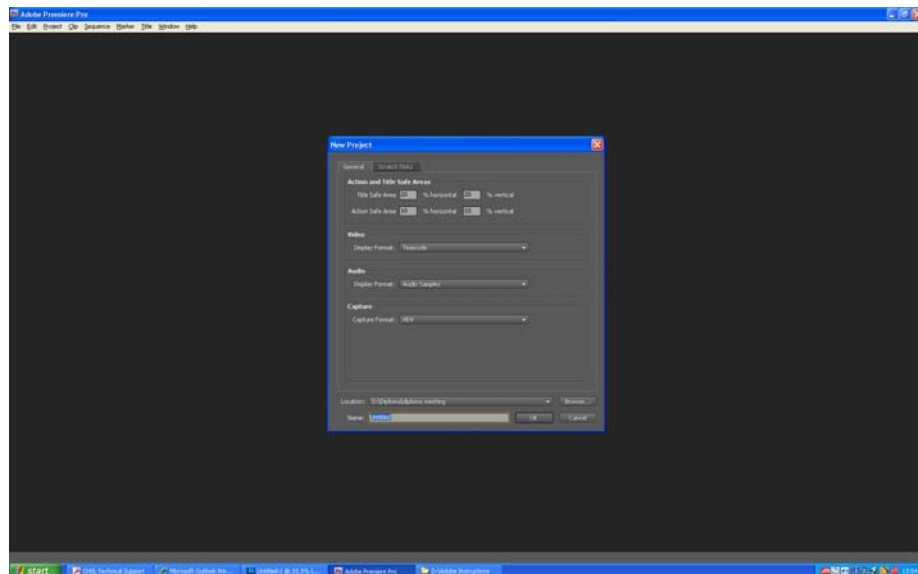
1. Starting out.

To begin using Adobe Premiere Pro please choose the icon in CORE APPS on the start menu.

The first thing you will see is a box asking whether you would like to create a new Project or work on an existing project. The most recent Projects will appear as their titles above “New Project”

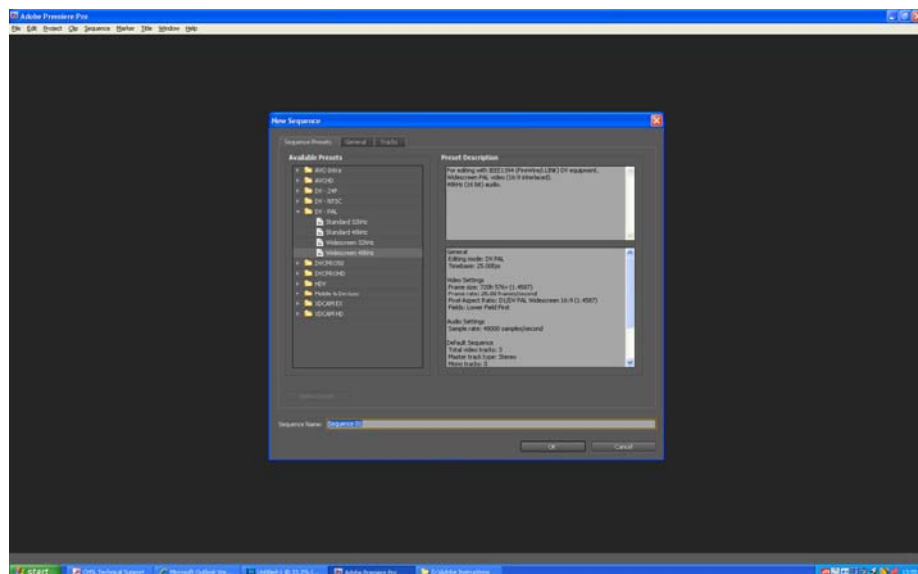
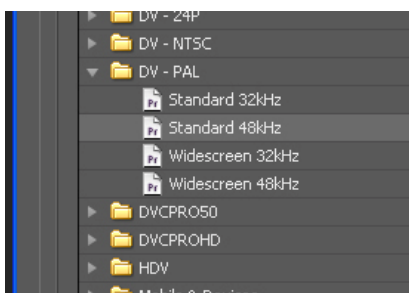


The Next window you see will ask you to name your new project.



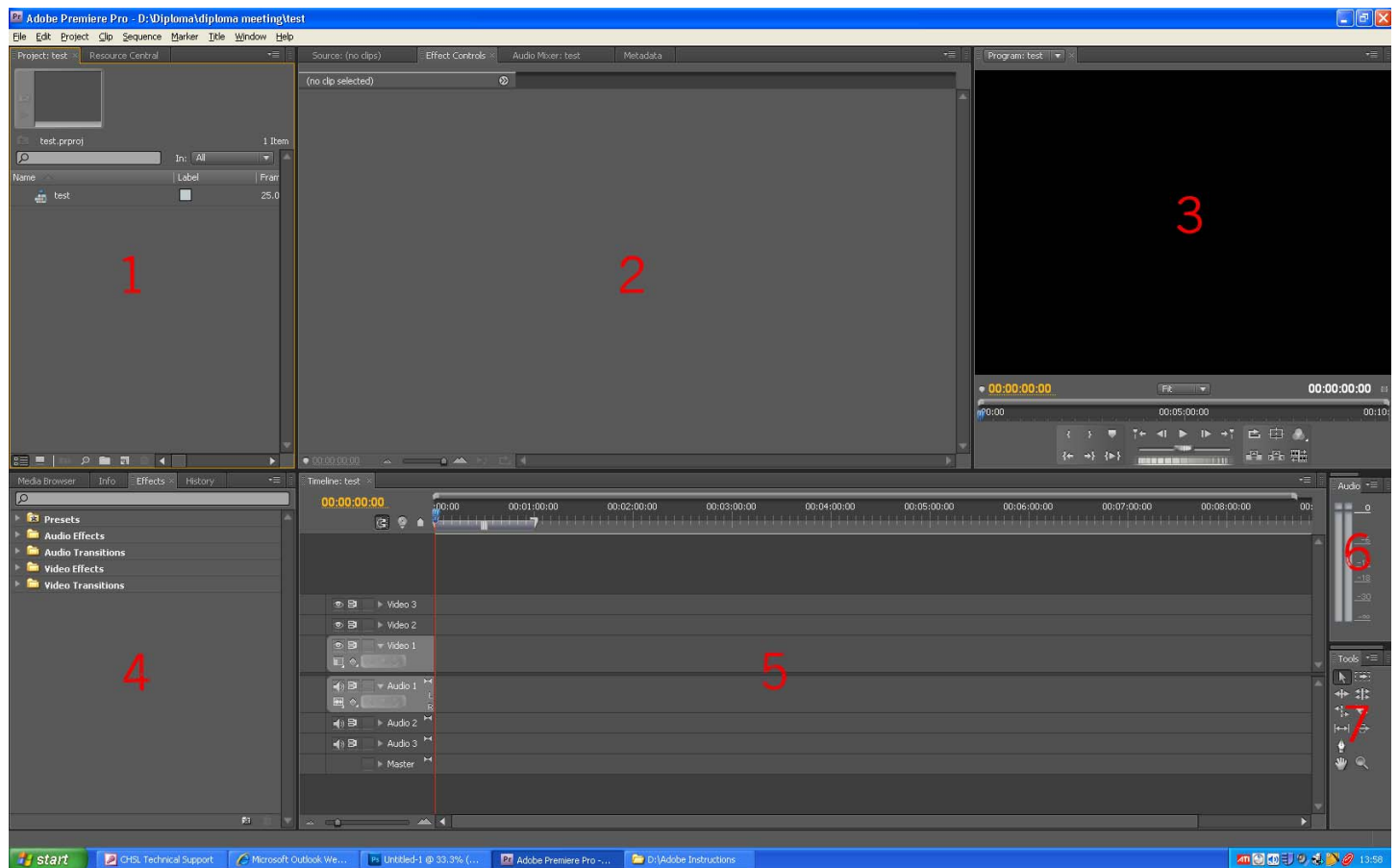
From there you will be asked to specify the project presets. These are to do with the Size of the video you are working with and the audio quality you used.

If you filmed using Flip cameras you would be best using DV PAL > Standard 48kHz



2. The Premiere Pro interface.

At first the Premiere Pro interface may be a little daunting but it can be easily split up into 7 areas that help you with your workload.



1 – Project – This is where all the files you use are stored. Each file you import automatically sits in this area for you to then drag into the timeline so you begin editing it.

2 – Effect Controls – Any effect you add to your footage can be controlled in here using a simple sliding scale system.

3 – Video Preview – This is where your video appears and you can watch what you have edited by pressing Play or hitting spacebar.

4 – Effects – A series of drop down menu's containing audio and video effects. These can be added by dragging them from this window onto your footage in the Timeline (See Key 5).

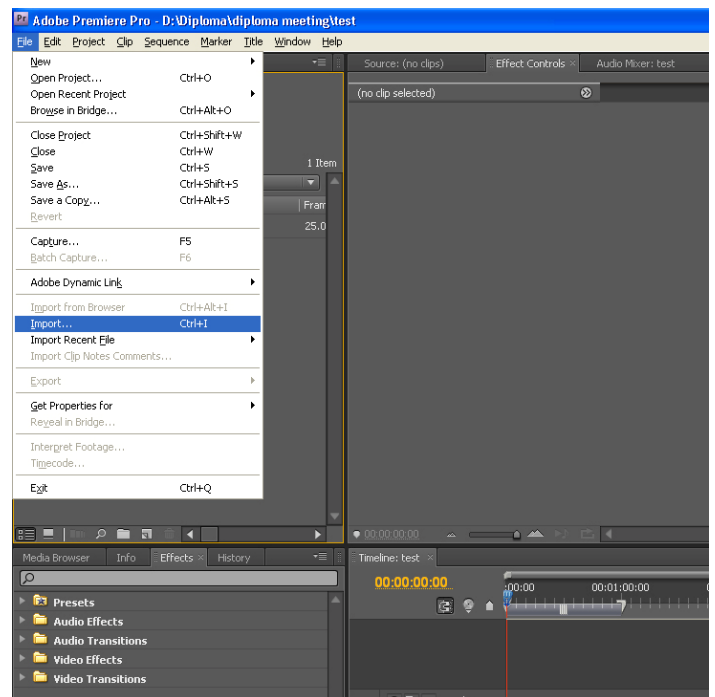
5 – Timeline – This where you edit your footage. Using the red line to travel along your footage this is your marker to make any edits. To move the marker just click the blue indicator at the top of the red line and slide it across using your mouse.

6 – Audio levels – These tell you how loud your audio is. If it's in the red then it is too loud and will crackle. Ideally you'll want your levels in the middle around the 12 mark.

7 – Tools – This window holds various Tools you can use to edit your footage. Try them all out to see what they do.

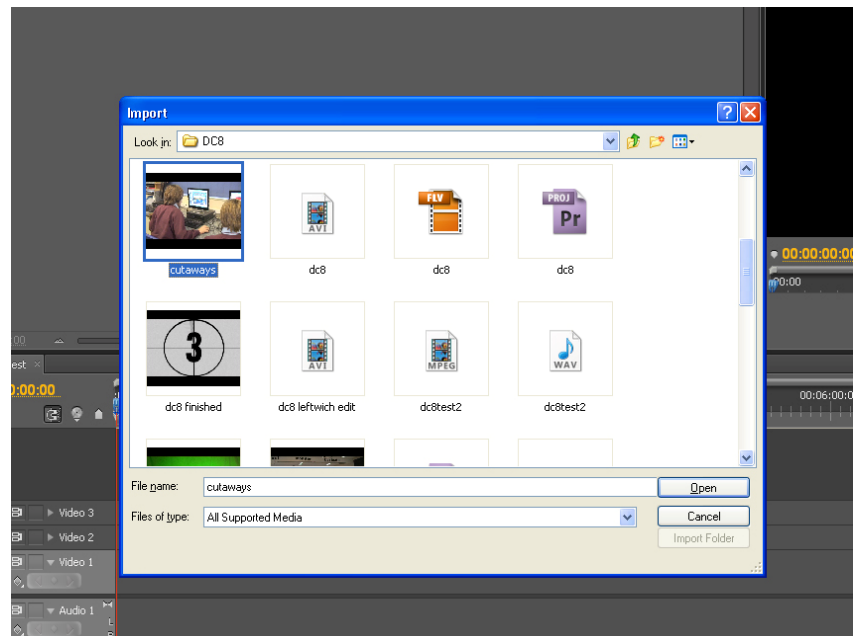
3. Importing Footage.

To start editing you need to import the footage
You have just shot. With the Flip cameras you
Simply need to save them into a folder.
Then you go to File >Import and a window will
Open up

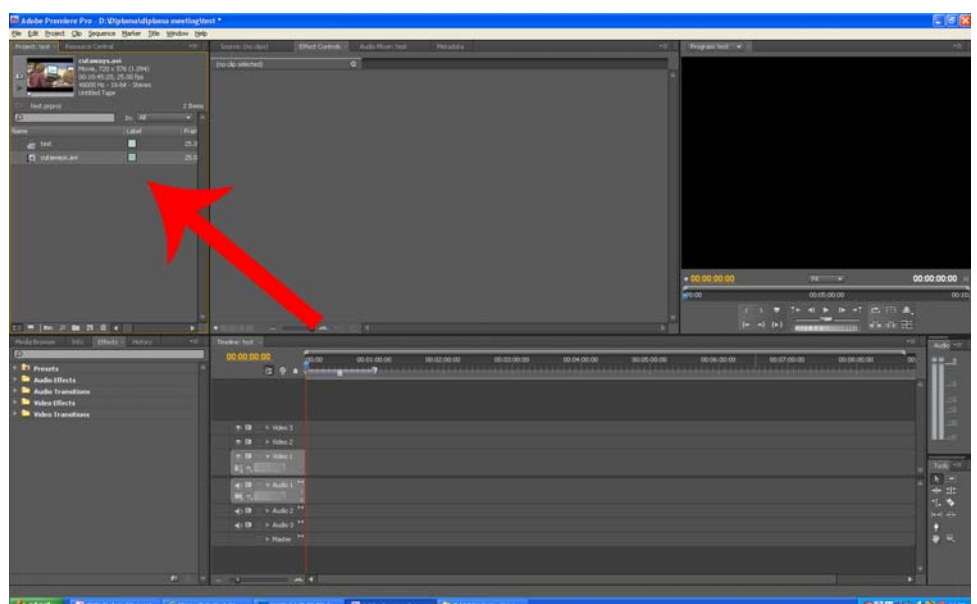


Select the footage you require and click
“Open”. This will import the footage.

You can select multiple files using
Control and Left Mouse click and then
Clicking on “Open”.

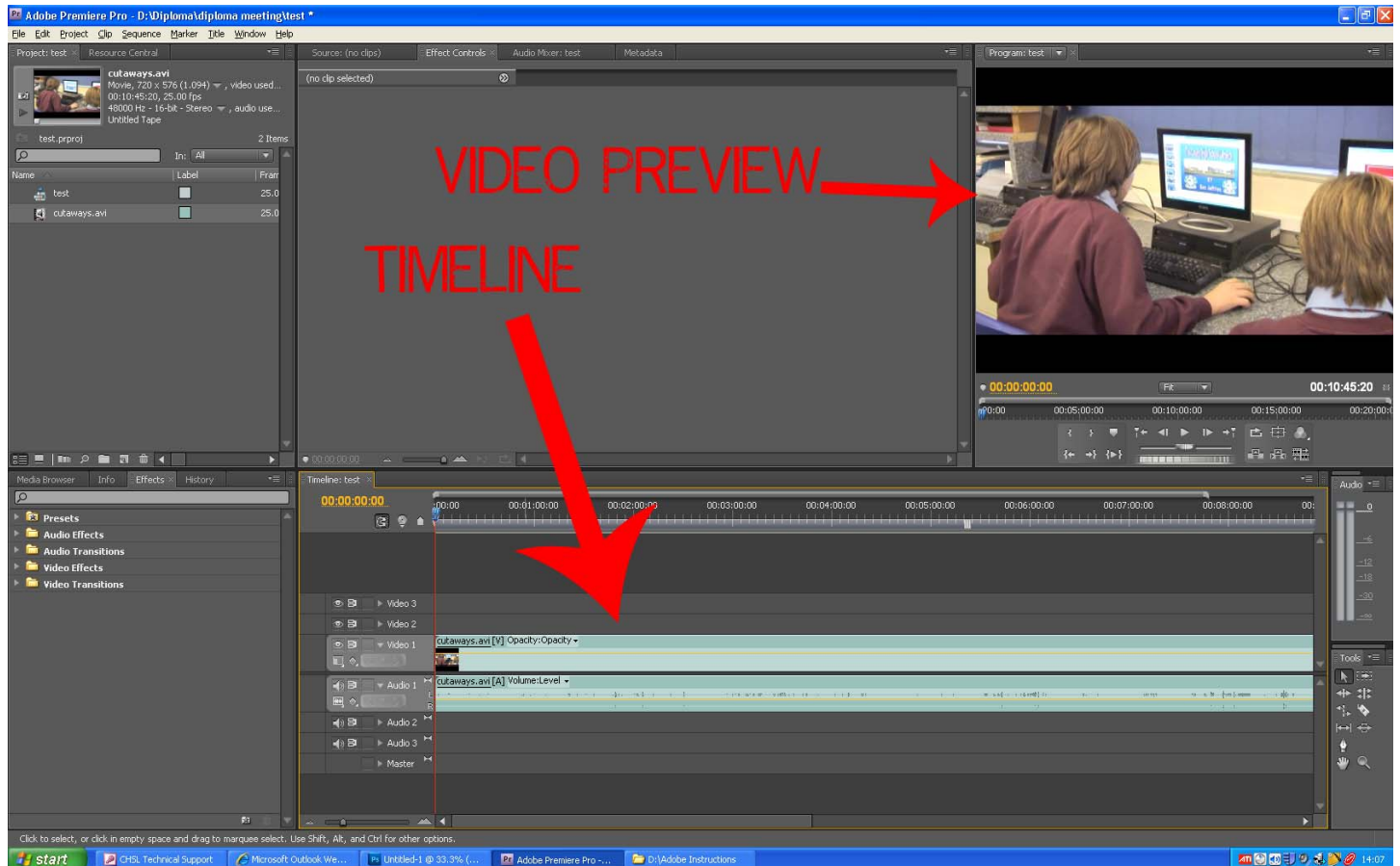


Your footage will now appear in
The Project window as indicated by
The red arrow.



4. Editing your Footage.

To begin editing your footage you must drag it into the TIMELINE by holding Down Left Mouse click on Film/Audio icon (See photo) and then drag it on to the TIMELINE.

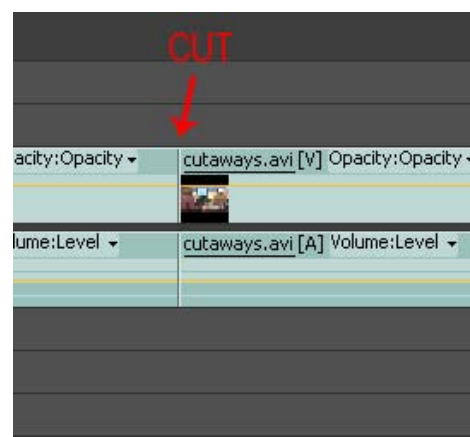


When it has been dragged onto the Timeline you will see your video appear in the Video Preview window.

5. Cutting out the bad parts of your Footage.

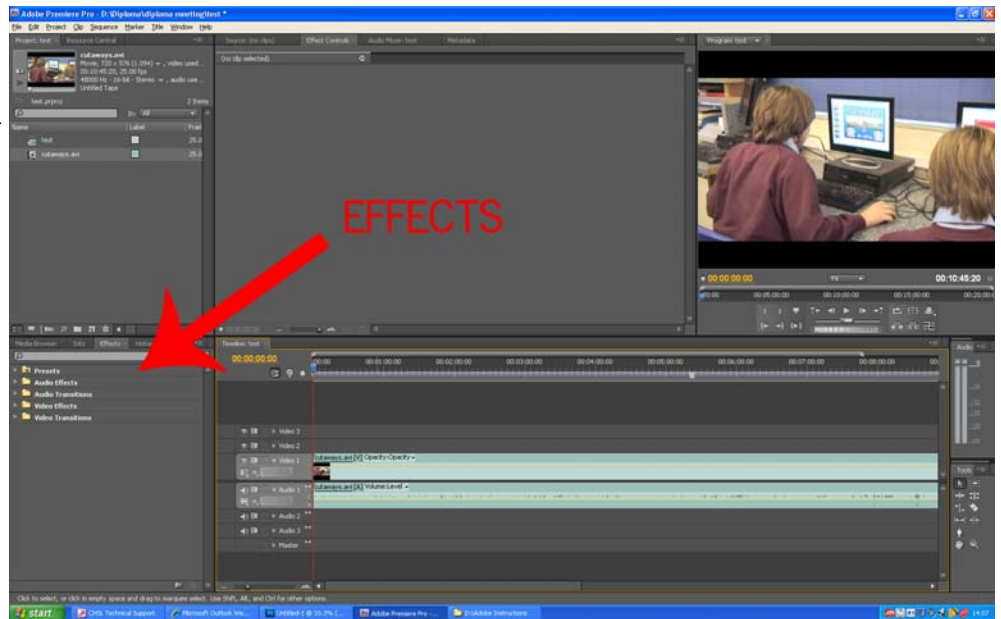
To make a cut on your footage press C on your keyboard and you will notice your cursor will change into a razor blade. Next you need to move the cursor to where you want to make a cut and press the Left Mouse button to make a cut.

If you find this lacks accuracy try moving the red line on your Timeline to where you want to cut and make it on the red line. This is a more accurate way of making transitions.

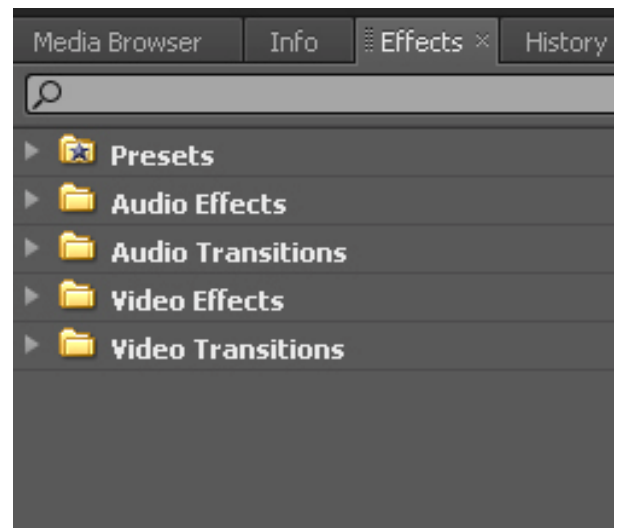


6. Adding Effects.

To add an effect couldn't be simpler. The effects are all stored in drop down menus on the bottom left of The Premiere Pro interface. (See photo)

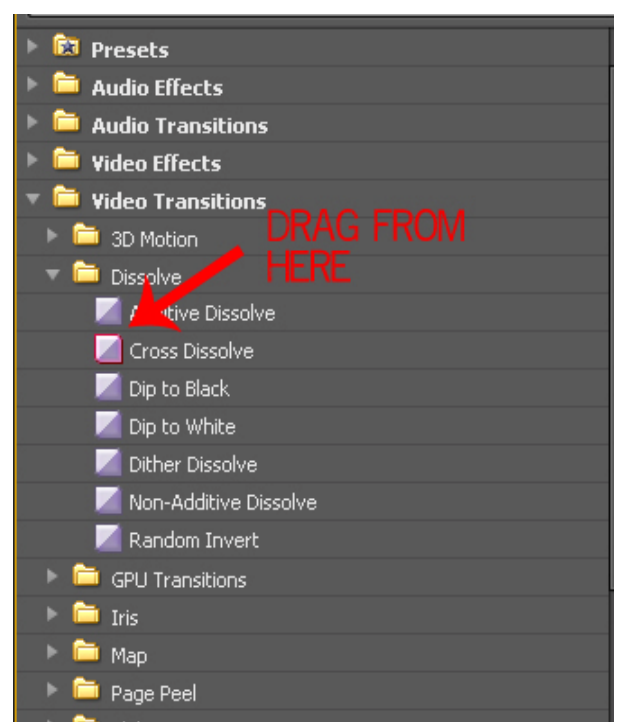
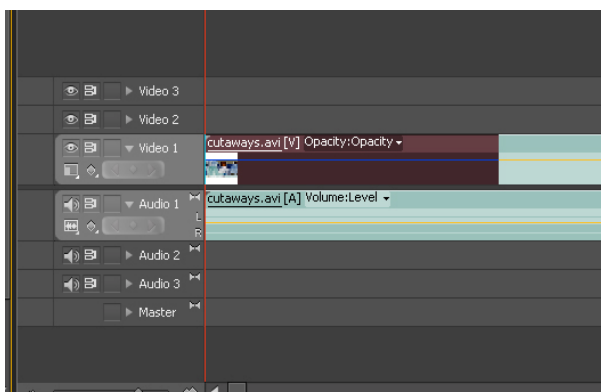


The effects are all stored in drop down menus within the Effects window. Just hit the arrow to find the one you want.

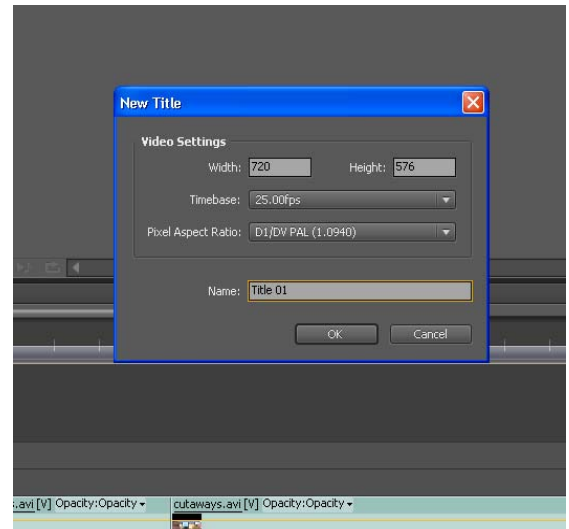
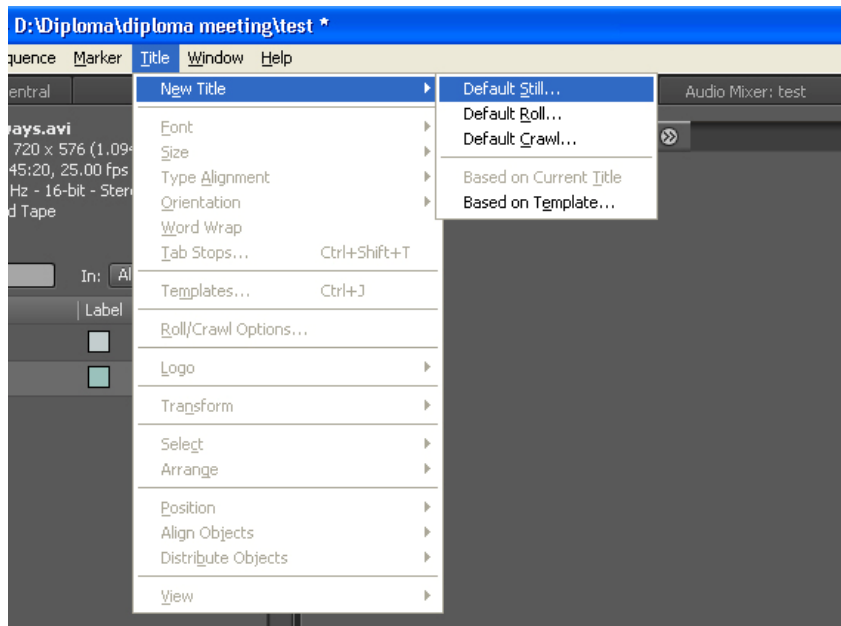


When you have found the effect you require then Drag it onto the timeline in the same way you did your footage and the effect will be applied.

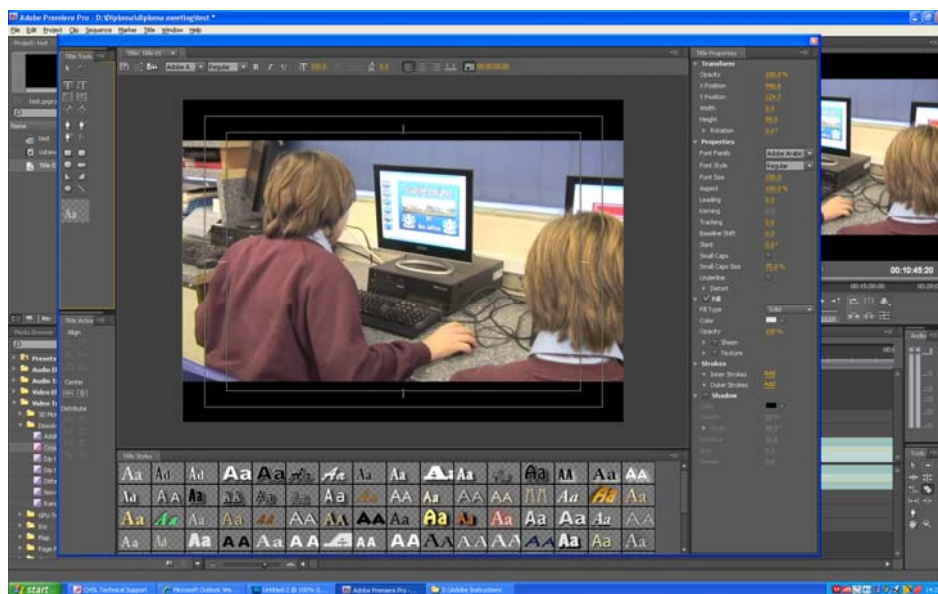
When the effect is in an area that it can be applied it will turn a burgundy colour. Let go of the left click button and it will be applied. (See below)



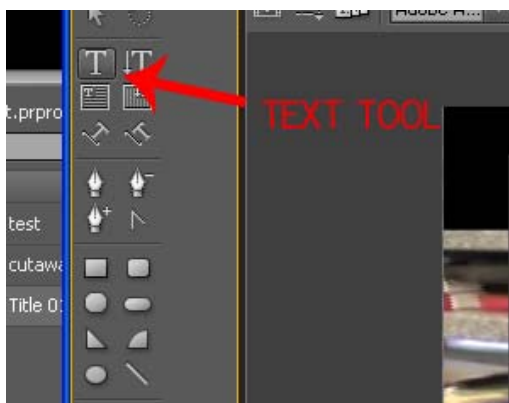
7. Adding Titles to your video.



To add a title to your video simply select TITLE at the top of your screen. Hit new title and select either Still (This will create a title that remains in one place), Roll (The title will roll up like a credit sequence) or Crawl (This title will roll along the screen like a ticker tape)



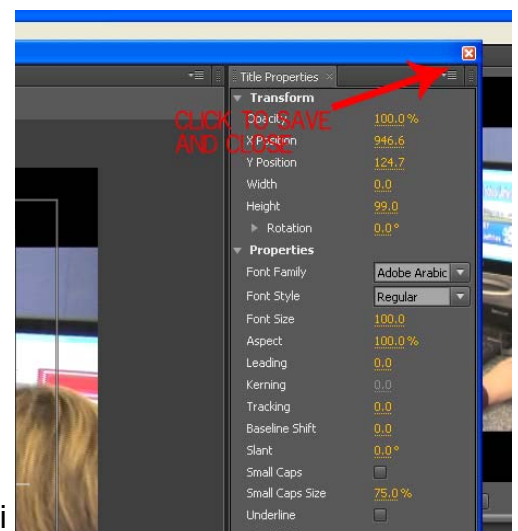
The title creation window will open (as seen above) where you can Type out your title directly onto the video preview.



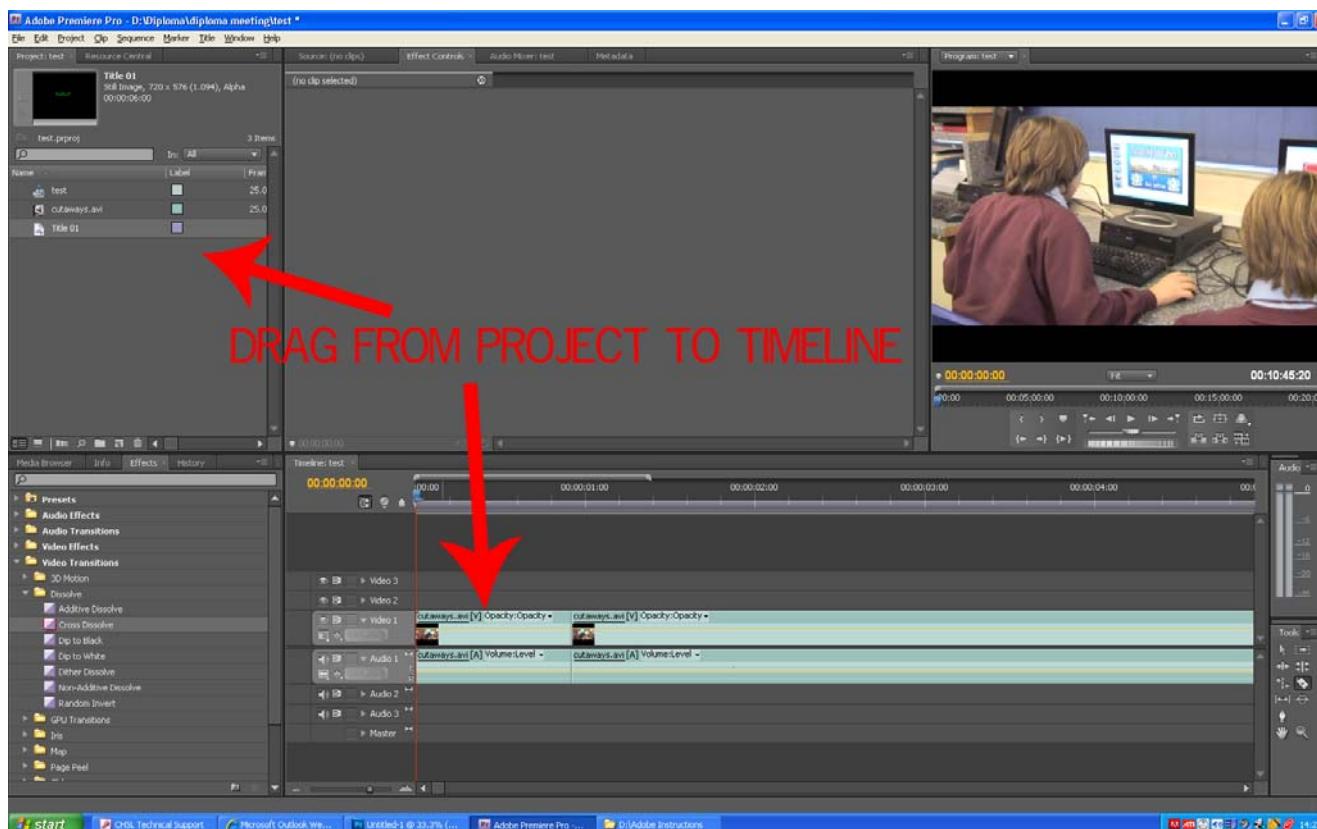
Select the "Text Tool"
In the top left hand corner
Of the window and then
Click where you want the
The title.

When complete click on
The small "X" in the top
Right hand corner of the
Window.

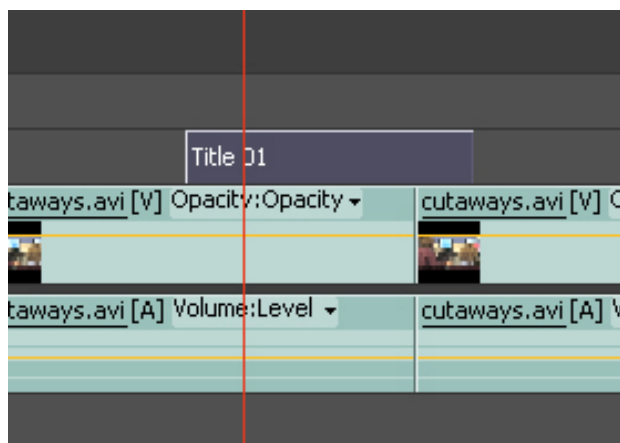
Resource by: Sir Faisal Chughtai



Once you have saved and exited the Text Creator window you must drag it from the Project bin onto your Timeline as you did with your footage earlier.

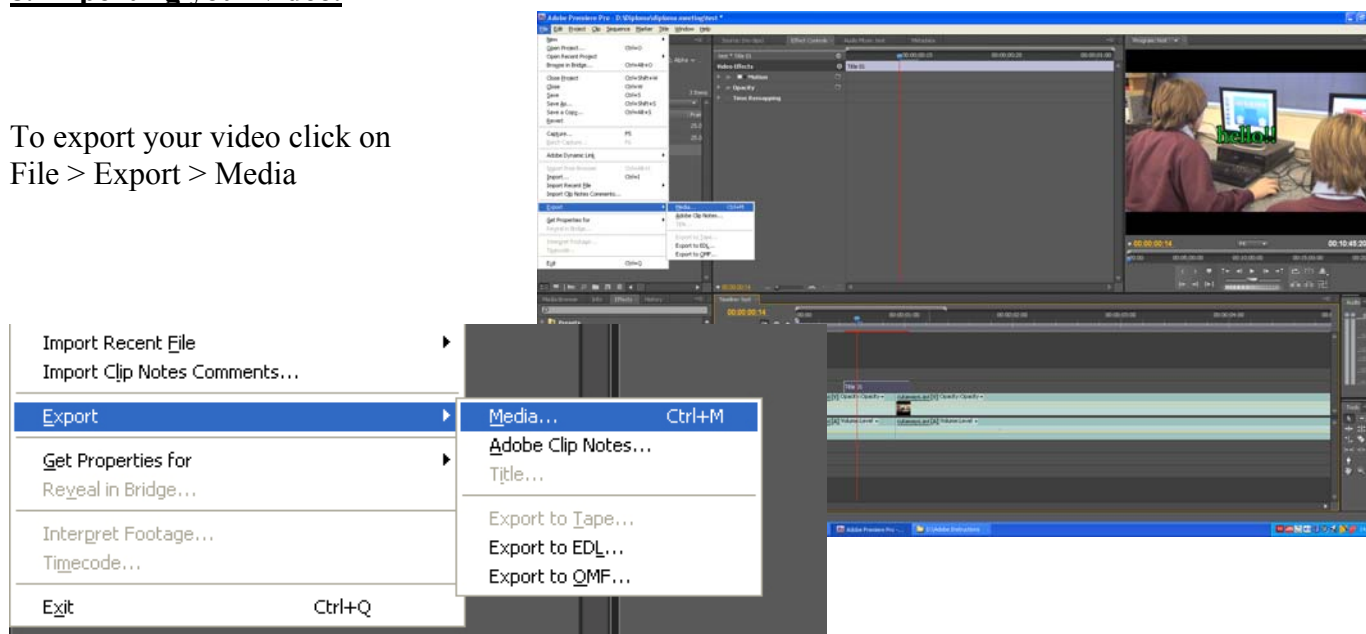


It will have to be placed on the video layer above the video as it works in a Hierarchy so whatever is on top is seen over what is below it.



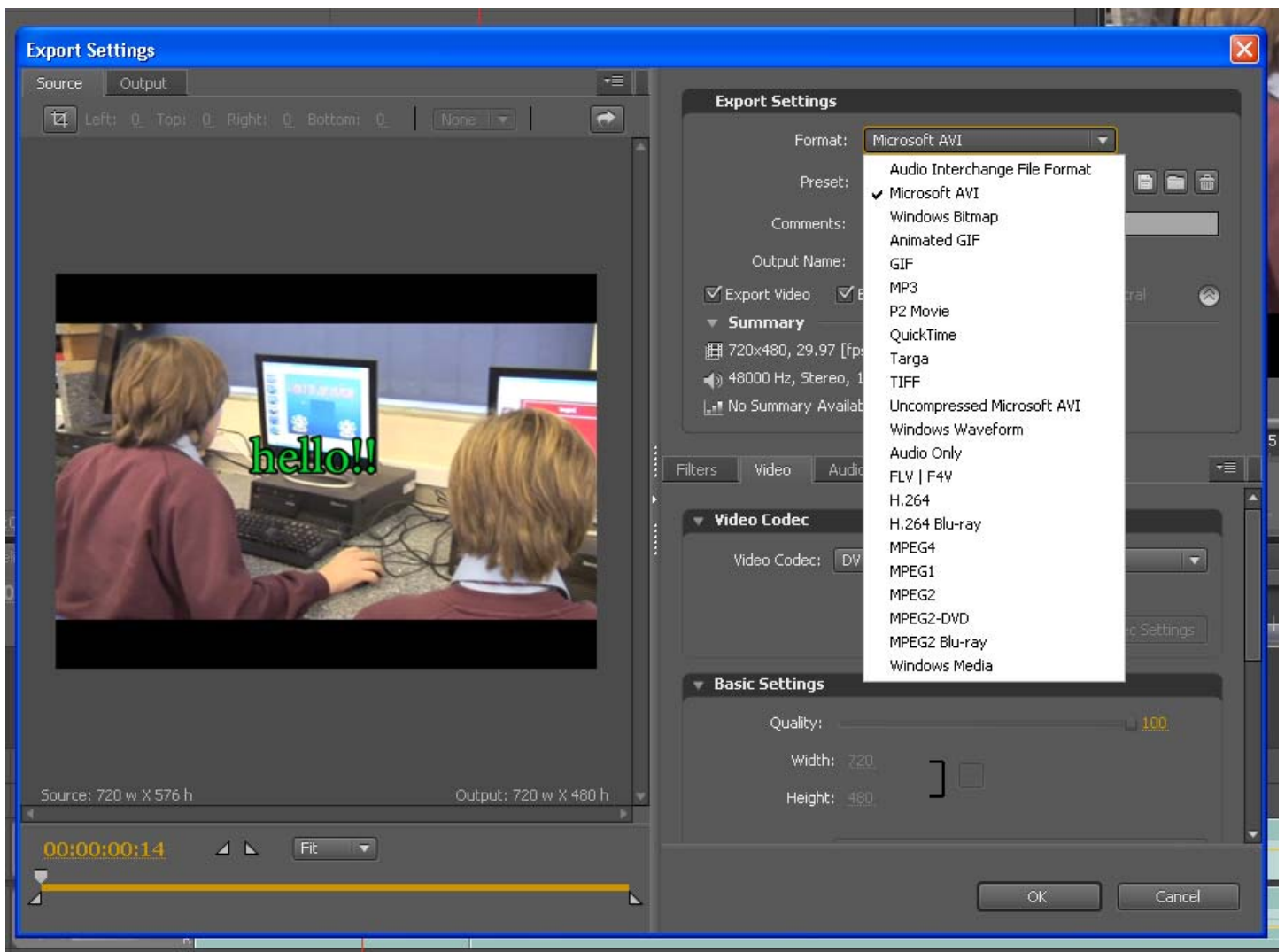
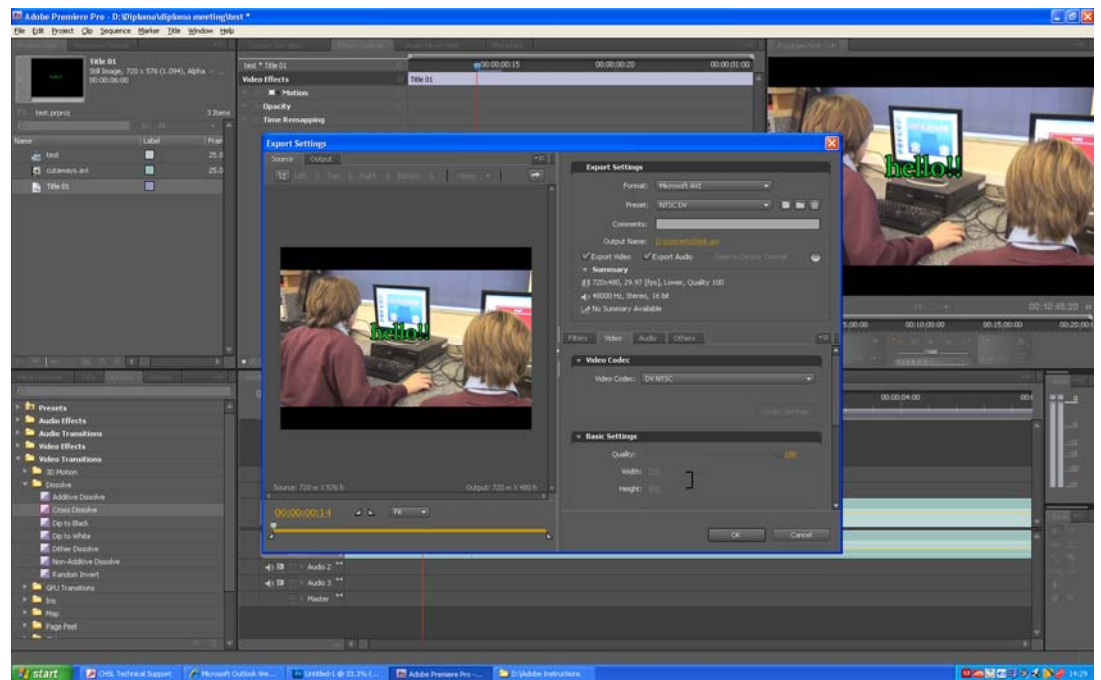
8. Exporting your video.

To export your video click on File > Export > Media



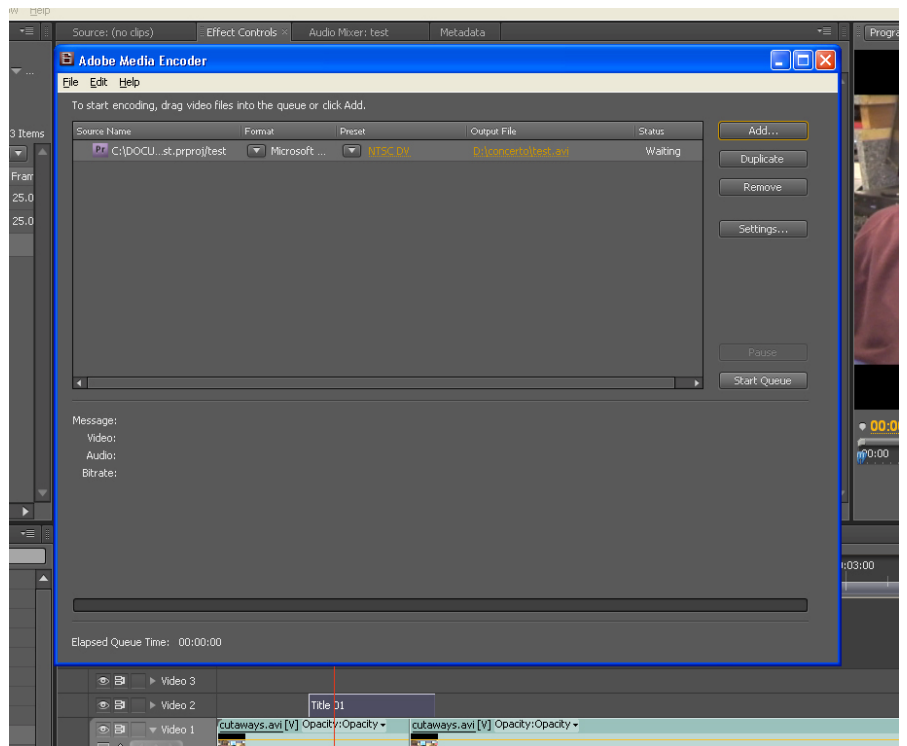
Resource by: Sir Faisal Chughtai

A new window will open up
(See photo to right)



From here you need to select the export settings. For best quality we recommend you play around with a few different settings until you get the settings you want. Email me in the Recording studio if you are not sure.

Once you have settled on the correct settings click “Ok” and a new window will open up where you can set the name and destination of your output file. Once you have set the destination click “Start Queue” and the file will begin Exporting.



Once the loading bar has finished and disappeared your file is now exported and ready to watch from the destination folder you set it to.

Enjoy your video!